

SEPTEMBER 21, 2024

# BLB HANDOUTS

WORKSHOP 3: 1:15-2:15PM

---



## Thanks for coming!

I just want to say that it has been a privilege to be a part of the 7th Annual 2024 Embracing Biblical Womanhood Conference. What an awesome Women's Ministry we have at Berean!

Attached are your Dig Deeper Handouts for the BLB workshop:

Dig #1: Database Search

Dig #2: Bible Tools

Dig #3: Interlinear

Dig #4: Bible English Versions

Dig #5: Inductive Bible Study

I hope that I got you excited about getting into the Word using BLB- which will help you grow in your relationship with God. I will be praying for the Lord to give you the desire to get nearer to Him daily!

Love,  
Angela Greenberg

## MORE BLB FEATURES

---

### SET UP A BLB ACCOUNT

Creating an account allows you to transfer settings and save preferences across devices.

### THE COPY FEATURE

This feature allows you to conveniently copy multiple verses in just a few clicks.

### DAILY DEVOTIONALS

In addition to the Daily Bible Reading Plans, BLB offers several daily devotional readings in order to help you refocus on Christ.

# Set Up a BLB Account

WHY HAVE AN ACCOUNT?

For years now, users of the Blue Letter Bible have had the option to select a preferred default Bible translation. With the launch of the latest version of the Blue Letter Bible, they have provided users with many more opportunities to customize their Bible study experience. Among this growing list of options are:

- Bible Page Formatting
- Default Tab in Bible Tools
- Words of Christ in Red
- Interlinear Preference
- Strong's Numbers
- Bible Tools Button Style
- Footnotes
- Site Customization
- Widget Selections

READ MORE >> <https://www.blb.org/help/account.cfm>



## Daily Devotionals

READ MORE >>  
<https://www.blb.org/devotionals/>

To subscribe to the Daily Devotionals on the BLB site, you must first have an account. You can use your account to manage your subscriptions.

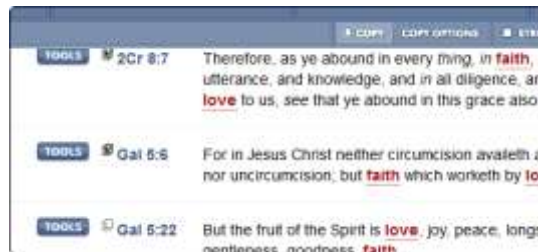
Devotional information will not show up until your account has been activated.

Once you have set up an account and logged in, you can then go to their Daily Devotionals page to get started.

DEVOTIONALS INDEX >> <https://www.blb.org/devotionals/DSindex.cfm>

# The Copy Feature

COPY AND PASTE MULTIPLE VERSES



One of the BLB's goals is to facilitate the preparation of Bible studies for personal use and the local church. They know that part of this is the continual searching, copying, and pasting of verses into emails and word-processor documents. To make this easier, they have introduced a Copy Feature—this allows you to conveniently copy multiple verses in just a few clicks.

Follow the four easy steps to take advantage of this tool!

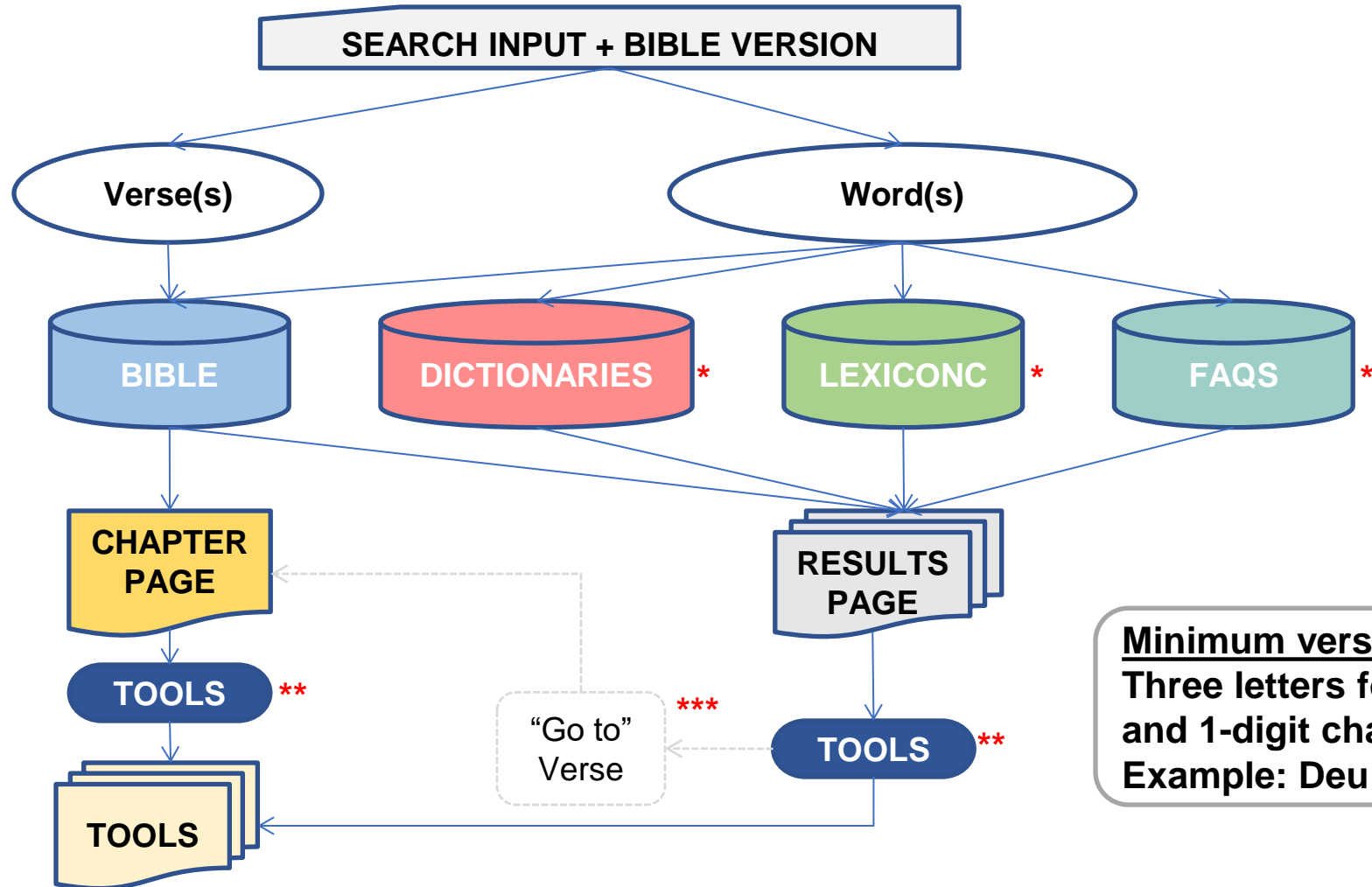
READ MORE >>  
<https://www.blb.org/help/CopyFeature.cfm>

### Seeking God: Lifelong Pursuit

The Word daily— apply to heart and life

- Pray for desire
- Build a time as priority
- Form or join accountability group

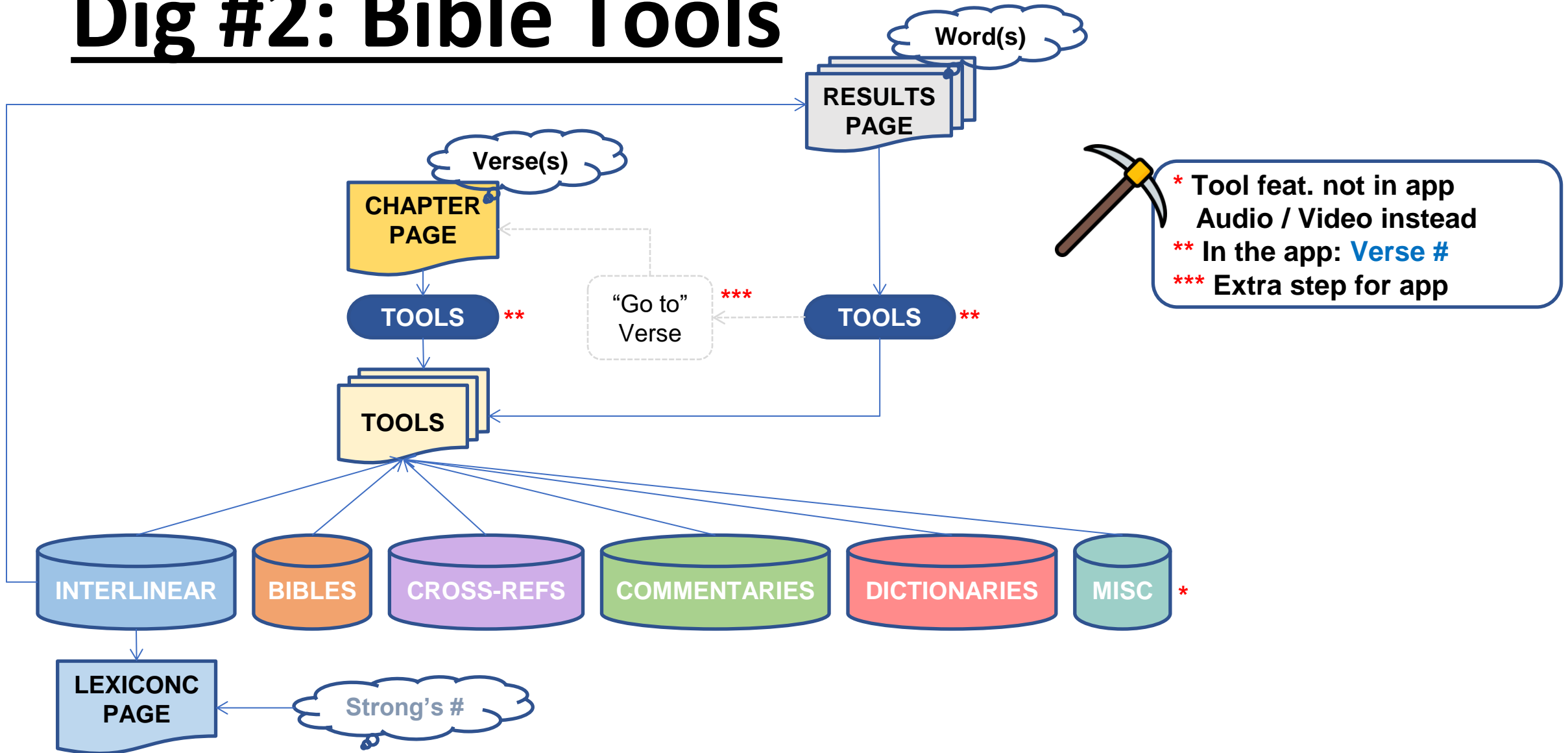
# Dig #1: Database Search



\* Search feat. not in app  
\*\* In the app: Verse #  
\*\*\* Extra step for app

Minimum verse input  
Three letters for book  
and 1-digit chapter #.  
Example: Deu 1

# Dig #2: Bible Tools



# Dig #3: Interlinear

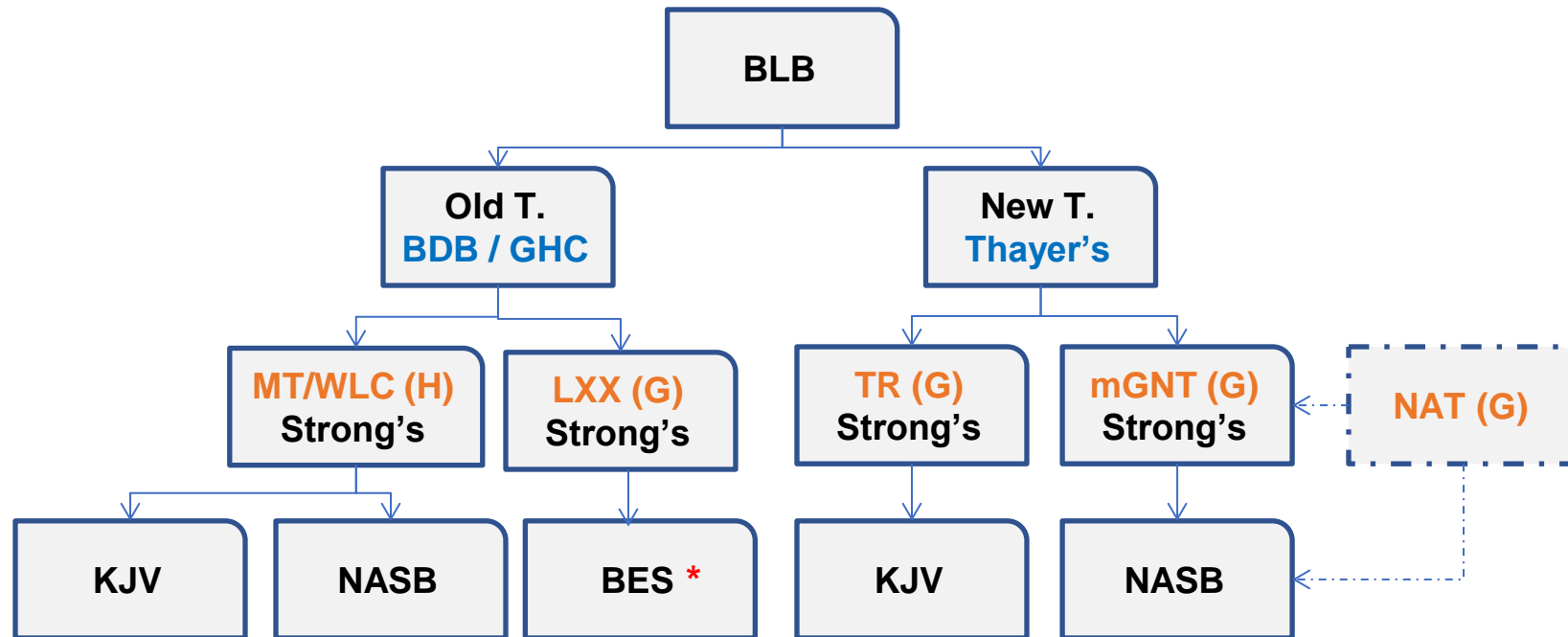


## LEXICONS

BDB — Brown-Driver-Briggs  
GHC — Gesenius' Hebrew-Chaldee  
Thayer's — Thayer's Greek

## ORIGINAL LANGUAGES

MT/WLC — Masoretic Text /  
Westland Leningrad Codex  
LXX — LXX Septuagint  
TR — Textus Receptus  
mGNT — Morphological Greek NT  
NAT — Nestle-Aland Text



H = Hebrew // G = Greek

## \* NOW AVAILABLE

### Brenton's English Septuagint (BES)

Translation of the Greek Septuagint into English by Sir Lancelot Charles Lee Brenton.

MORE LITERAL  
LESS INTERPRETATIVE  
MORE WORD FOR WORD

# Dig #4: English Versions

MORE PARAPHRASE  
MORE INTERPRETATIVE  
MORE CONCEPT FOR  
CONCEPT

Young's Literal	ESV* RSV ASV	NASB* LSB KJV*	DBY NKJV*	BBE HNV WEB	NET CSB	NCV NJB NAB	Phillips ICB NLT NIV	CEV GNT	TLB	Msg
--------------------	--------------------	----------------------	--------------	-------------------	------------	-------------------	-------------------------------	------------	-----	-----

**ASV** = American Standard Version  
**RSV** = Revised Standard Version  
**ESV** = English Standard Version  
**KJV** = King James Version  
**LSB** = Legacy Standard Bible  
**NASB** = New American Standard Bible  
**NKJV** = New King James Version  
**DBY** = 1890 Darby Bible

**WEB** = World English Bible  
**HNV** = Hebrew Names Version  
**BBE** = Bible in Basic English  
**CSB** = Christian Standard Bible  
**NET** = New English Translation  
**NAB** = New American Bible  
**NJB** = New Jerusalem Bible  
**NCV** = New Century Version

**NIV** = New International Version  
**NLT** = New Living Translation  
**ICB** = International Children's Bible  
**Phillips** = J B Phillips Paraphrase  
**GNT** = Good News Translation  
**CEV** = Contemporary English Version  
**TLB** = The Living Bible  
**Msg** = The Message



\* To help understand the main point of Scriptures, **start with any of these recommended literal translations** and also read other translations.

Multiple sources  
BLUE = In BLB

# Dig #5 – Inductive Bible Study

## OBSERVATION

What does it say?

- Compare translations \*
- Ask questions
- Find key words \*
- Observe literary features
- Analyze the structure

## INTERPRETATION

What does it mean?

- Consider the context \*
- Compare Scripture with Scripture \*
- Word studies \*
- Topical studies \*
- Consult other resources \*

## APPLICATION

How do I respond?

- Establish the relevance
- Appropriate the meaning in heart
- Be ready and willing to be transformed
- Determine how to put into practice



**The goal of inductive Bible study is...  
Not to make us smarter sinners.  
But to make us more like our Savior.**

<https://biblestudy.tips/inductive-bible-study/>

\* Use BLB Tools  
for this step